

wirral
vikings



wirral vikings

Wirhalh Skip Felagr - The Wirral Ship Fellowship

hedeby hood

Construction of a basic Hedeby Hood

V1.0 – 12.11.2024

© Wirral Vikings 2024 – Illustrations by Andrew Quick



This guide will show you how to make a basic Hedeby Hood.

measurements

We first need to take some measurements.

A) Front and rear main section – This is the main head area of the Hood onto which the other elements are sewn in turn.

B) Hood back tail – This is the back tail area of the hood.

C) Back Gore Sections – These two piece form the back Gores of the hood.

D) Hood attachment section – This section joins to the Hood C, G & A and the hood section B.

E) Front Gore Sections – These two piece form the front Gores of the hood.

F) Front Hood Section – The very front of the hood joins to part A and Gore E

G) Very Back Gore – The final Gore is folded and both sides sewn to the side pieces on that side.

reference:

a=

b=

c=

d=

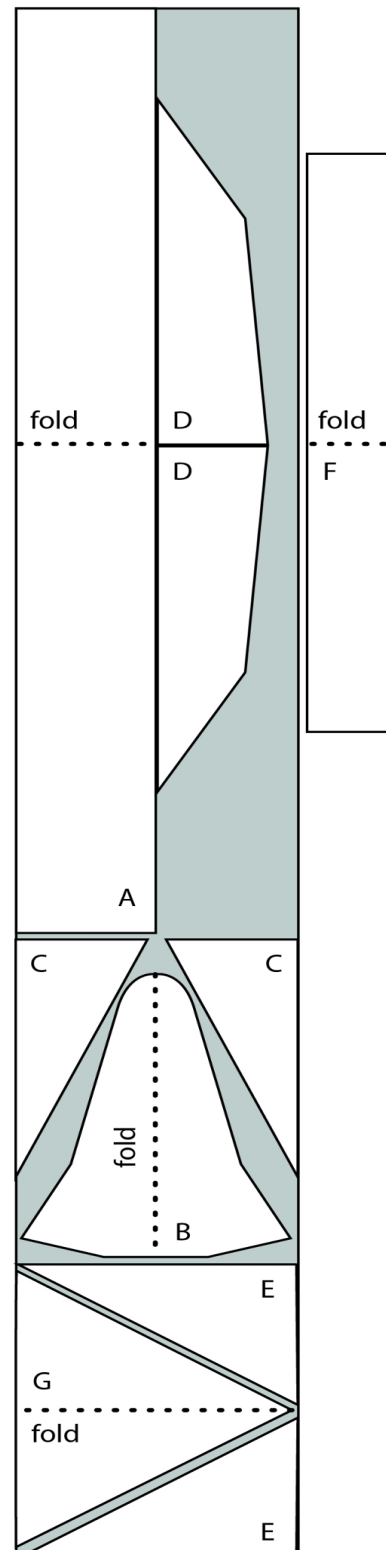
e=

f=

g=

Please Note:

Depending on whether you prefer to work in inches or centimetres, add 5/8" or 1.5cms on **EVERY** seam edge as a "seam allowance"





templates

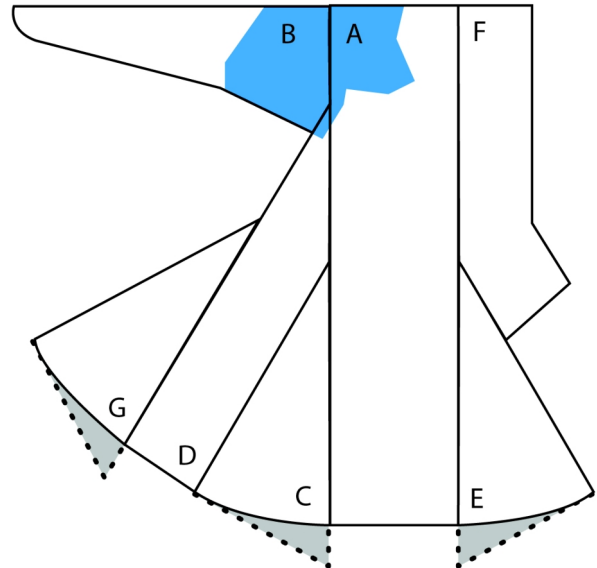
If you are confident in cutting your material straight away you could skip this section but if like use some greaseproof paper to make templates.

Templates are a good what to check that you have measured yourself accurately. There is nothing worse than cutting your material only to realise you have not measured correctly

Template also allow you to make sure you use you material in a most efficient way with little waste.

Using you templates will allow you to correct any mistakes or miscalculations.

Check and recheck your measurements till you are happy to proceed.



making the hood

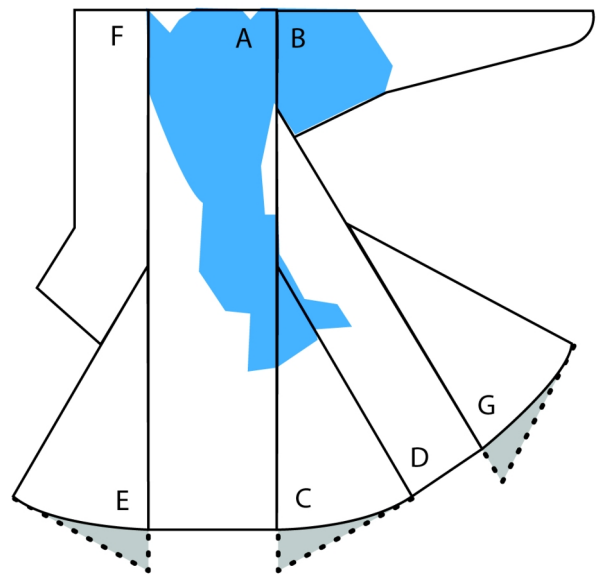
Putting all the elements together to make your Hedeby Hood.


The original Hedeby hood when found only contained the elements in blue. This design is based on conjecture about what the original hood might have looked like.

How you attach the parts of the hood is up to you but I usually start from 'A' and work outwards. The 'B' section of the back of the hood works best if the 'C' and 'D' parts are attached first.

On the front attach section 'E' and 'F' to section 'A'. We found sewing section E first and then finally 'F'.

The extra bits of the hood can be trimmed to give the lower part a more refined shape and then hemmed.



 This shows the parts found of the original Hedeby Hood

